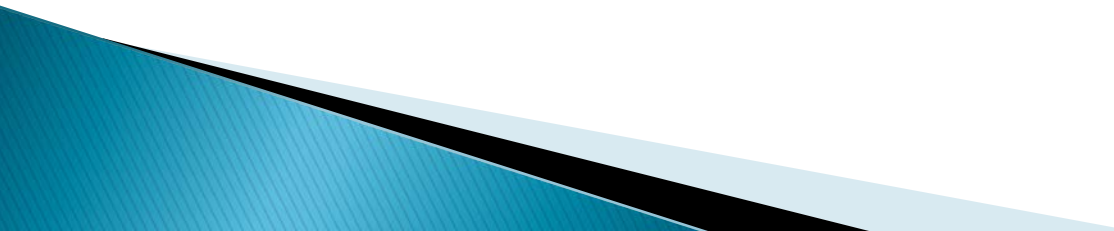


Succeeding in Proposal Development

Tony Ventimiglia
Office of Sponsored Programs
Auburn University
January 21, 2015

Outline

- ▶ Writing the Proposal (What to know before starting....)
 - ▶ Proposal Components
 - ▶ Funding Opportunities
- 

Writing the Proposal

Writing is thinking.

To write well is to think clearly. That's why it's so hard.
David McCullough



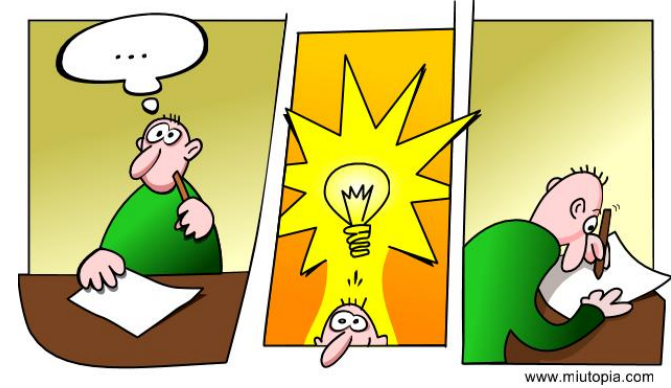


Why Do I Want To
Do This??

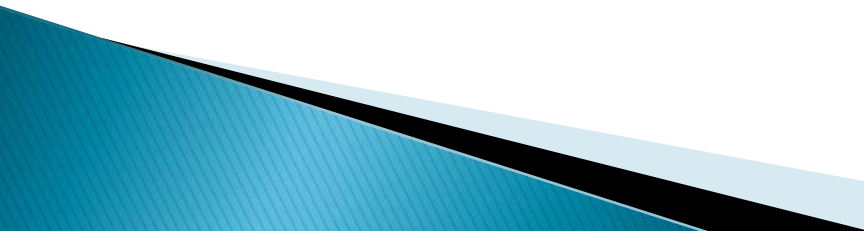


A Great Idea

- ▶ Solves a real problem
- ▶ Significant— potential for impact (i.e., making a difference)
- ▶ Innovative— novel/imaginative concepts(NOT a Me2)
- ▶ Well Timed
- ▶ Feasible
- ▶ Measurable Outcomes
- ▶ Ethical
- ▶ An idea others can understand... and would be willing to fund if they had the money
- ▶ Makes others wish they had come up with it themselves



Know Your Sponsor

- ▶ What is the mission of the sponsor?
 - ▶ What do they typically fund?
 - ▶ What kind of money do they have and how big is a typical project?
 - ▶ Who is their customer base or constituency?
 - ▶ How will this proposal be reviewed?
- 

Studying the Request for Proposal

1st Step

- Print out the RFP
- Read CAREFULLY...do not scan
- Highlight specifics
- Use RFP as your proposal outline

Pay Attention To

- Program description (to assess fit)
- Award information
- Proposal preparation instructions (AND proposal guide)
- Review process

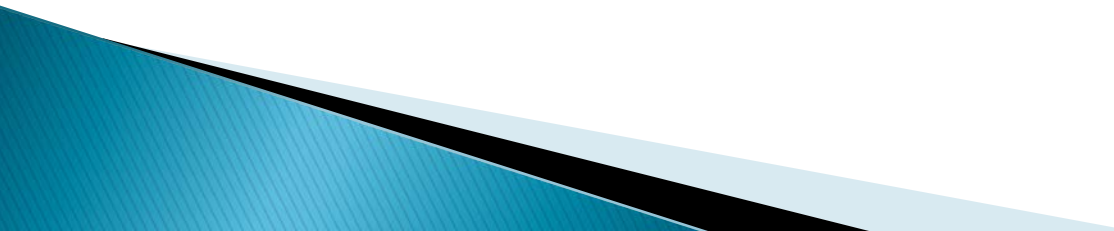
Tips

- Note any special requirements
- Ensure PI/Institution eligibility
- Make no assumptions
- Plan your proposal months in advance

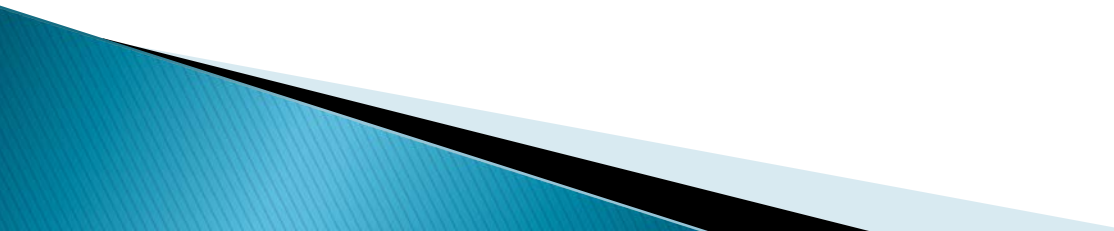
Solicitation Scavenger Hunt



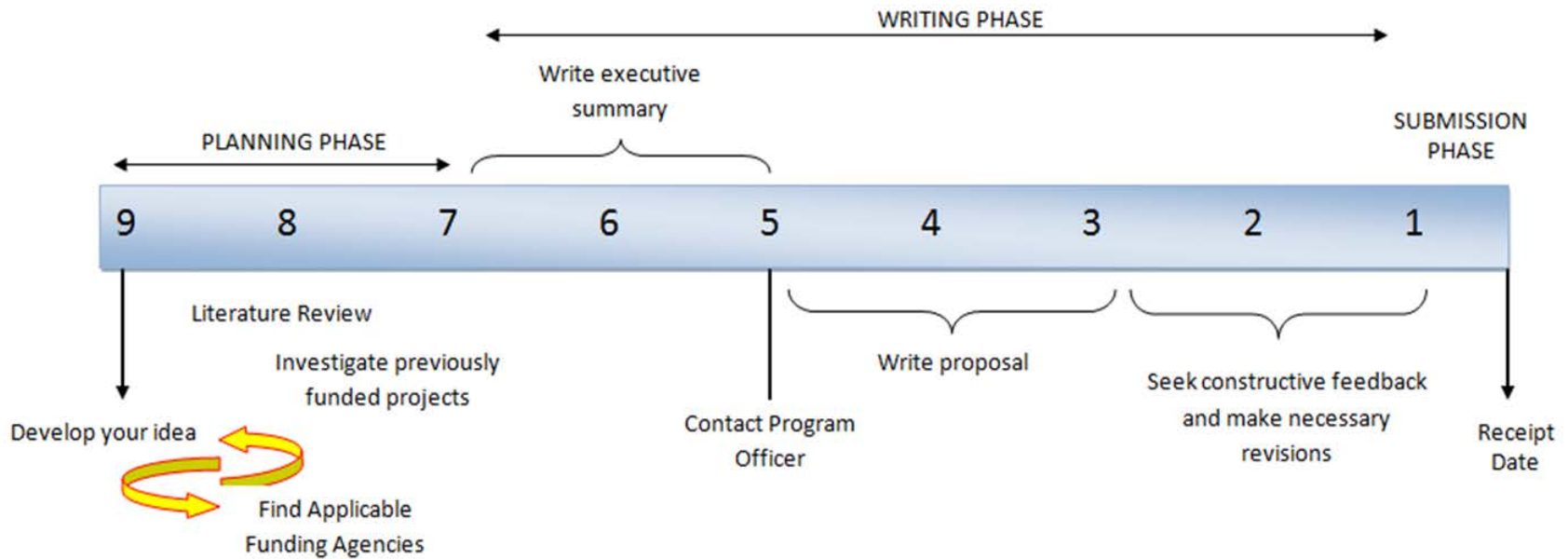
Know Your Organization

- ▶ How does this fit in with the mission of your institution?
 - ▶ What resources are available to you?
 - ▶ Who else in the organization could you partner with to strengthen the project?
 - ▶ Who has to approve your efforts?
- 

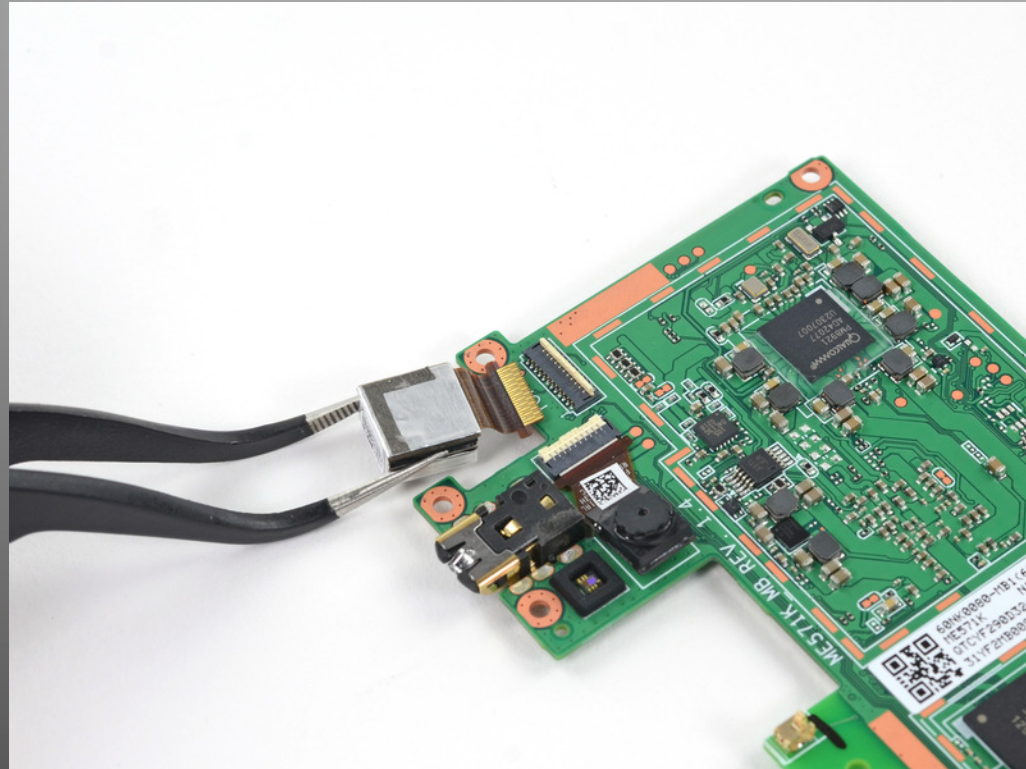
Know Your Project

- ▶ What are you trying to accomplish and how will you do it?
 - ▶ Who is your target audience?
 - ▶ What expertise do you have available to you?
 - ▶ What else has been done in this area?
 - ▶ Who will benefit from this work?
- 

Proposal Application Timeline



Components of a Proposal



- ▶ Abstract
- ▶ Introduction
- ▶ Objectives (Goals)
- ▶ Procedures (Methods)
- ▶ Evaluation
- ▶ Dissemination
- ▶ Facilities & Personnel
- ▶ References
- ▶ Budget
- ▶ Appendices

*Generally referred to as the
Project Description*

Funding Opportunities



NSF Graduate Research Fellowship

- ▶ Must be U.S. citizen, national or permanent resident
- ▶ Typically eligible to apply*:
 - During the senior year of college;
 - After graduating from college and prior to entering graduate school;
 - During the first year of graduate school; or
 - Prior to completing the fall term of the second year of graduate school.

* *Applicants must have completed no more than 12 months of full-time graduate study or its equivalent as of August 1, 2015*

NSF Graduate Research Fellowship

- ▶ Amounts:
 - \$32,000 for 12-month stipend
 - \$12,000 for cost-of-education allowance
- ▶ Three-years of support (during a five-year fellowship period)
- ▶ Submitted via Fastlane System by Fellow
- ▶ Deadline in the Fall

NSF SBE Postdoctoral Research Fellowship

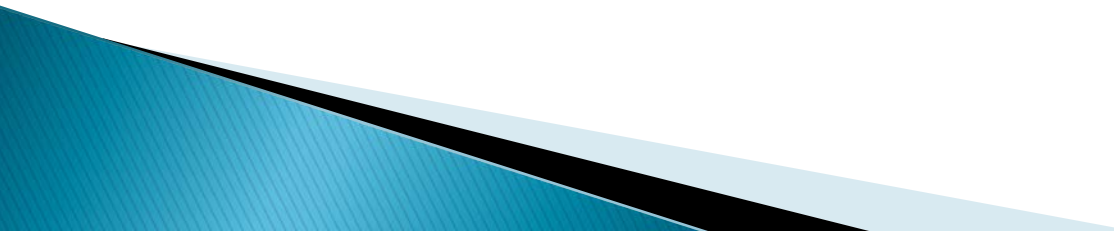
- ▶ Must be a U.S. citizen, national, or legally admitted permanent resident alien of the United States as of the application deadline
- ▶ Other Eligibility:
 - Obtained the doctoral degree within 36 months before the application deadline or will obtain the doctoral degree within 10 months after the application deadline;
 - Not already in a full-time tenure-track faculty position.

NSF SBE Postdoctoral Research Fellowship

- ▶ The fellowship budget should include the following:
 - Salary plus fringe benefits (per institution rates) not to exceed \$62,000 per year for a maximum of two years. A student assistant can be included within this maximum amount.
 - Research and travel expenses up to \$10k per year. Travel expenses are meant for the Fellow, but may include no more than one trip for the Sponsoring Scientist or mentor if justified and necessary for the project.
 - Applicable indirect costs based on the awardee's current federally negotiated rate agreement.

NSF SBE Postdoctoral Research Fellowship

Additional travel expenses of up to \$10k may be requested if the Fellowship project includes an international component.

- ▶ Fellowship is for a maximum of two–years
 - ▶ Submitted via Fastlane System (or Grants.gov) by Institution.
 - ▶ Deadline in the Fall.
- 

NSF Early Career Development Program

- ▶ Eligibility:

Hold a doctoral degree by the deadline date in a field supported by NSF;


Be untenured until October 1 following the deadline; and

Have not previously received a CAREER award.

AND

Be employed in a tenure-track (or tenure-track-equivalent) position as an assistant professor (or equivalent title).

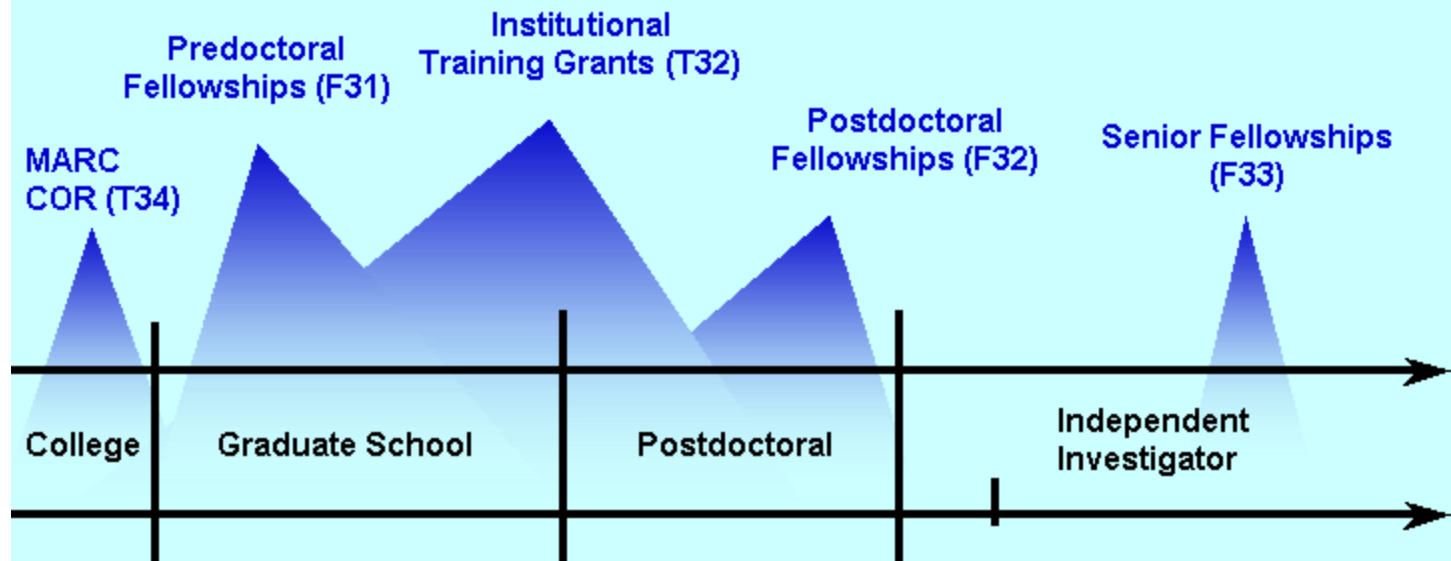
NSF Early Career Development Program

- ▶ Five year period of performance.
 - ▶ MINIMUM award of \$400,000.
 - ▶ Deadline in Summer (usually late July).
 - ▶ May only submit one proposal per annual competition and participate in no more than **three** competitions total.
 - ▶ Effectively integrates research and teaching.
- 

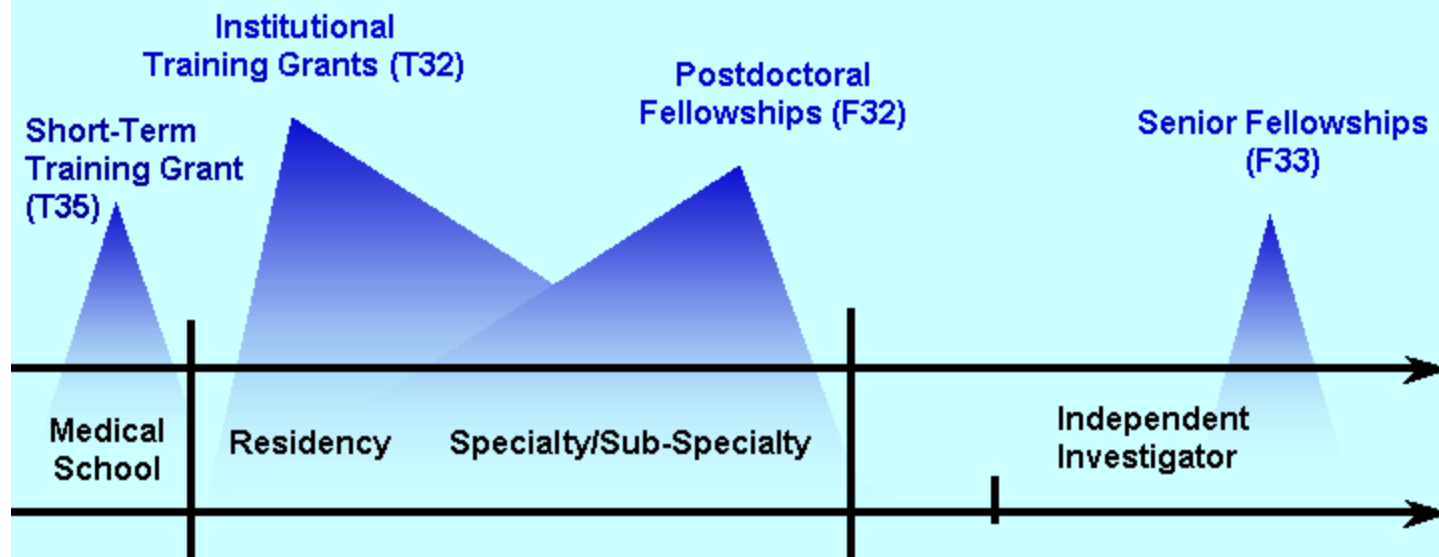
NIH Research Training and Research Career Development

- ▶ <http://grants.nih.gov/training/index.htm>
- ▶ Career Award Wizard:
<http://grants.nih.gov/training/kwizard/index.htm>
- ▶ National Service Research Award (NRSA):
<http://grants.nih.gov/training/nrsa.htm>

NRSA Fellowships and Training Grants (F & T Awards) for Individuals With or Earning a Research Doctorate



NRSA Fellowships and Training Grants (F & T Awards) for Individuals With or Earning a Health-Professional Doctorate



NIH Academic Research

Enhancement Award (AREA) [R15]

- ▶ Goals of the Program

 - Support meritorious research

 - Expose students to research

 - Strengthen the research environment of the institution

- ▶ Key Features

 - Project period is limited to 3 years.

 - Direct costs are limited to \$300,000 over the entire project period.

 - Grants are renewable.

 - Preliminary data are not required.



Comments or Questions?

ventiaf@auburn.edu